



Lawton & Dawe

PROPERTIES



4 Greenacres

, Shoreham-By-Sea, BN43 5WY

Offers In The Region Of £500,000

Lawton & Dawe Properties are thrilled to have for sale this Georgian style fronted, well presented family home in quiet Shoreham location. Entering the property, you are taken into a bright, light, living room with wooden flooring throughout, there is a large bay window and built in storage to the front corner. The homely lounge leads into a dining area with space for furniture and dining table, and under stairs storage. The back of the property houses the extension, providing a further seating area and large windows to overlook the garden. The kitchen has a cottage feel with ceramic sink, wooden worktops, built in microwave, colourful units, and plenty of storage!

Upstairs there are three bedrooms; a large master at the front with bay window and built in storage, a second good sized double with sink, and a third single / office / nursery. The bathroom is neutrally decorated with shower over bath. The property has gas central heating and double glazing throughout.

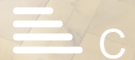
Out to the back of the property there is a large west facing garden with patio area, space for seating and brick barbecue, down the stone path you come to an outbuilding housing space for an office, climbing wall and a sauna! The outbuilding also has a secluded patio. A perfect family addition! On the compound there is a single garage and there is a rear alleyway with access gate to back of garden.

What the owner says; 'I've lived here for thirteen years and I'll miss the spacious, light rooms, feeling of privacy and sunny garden. I have enjoyed being able to take lunchtime walks along the river and becoming part of a family-focused community.'

- End of terrace family home
- Three bedrooms
- Large west facing garden
- Outbuilding with sauna/office
- Gas central heating
- Garage in compound
- Large bay windows

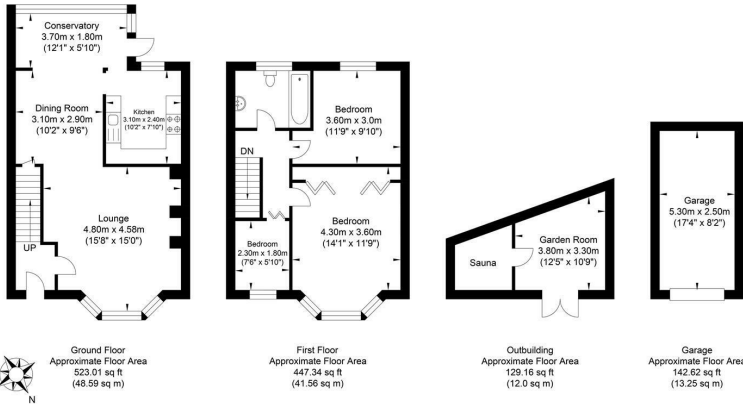
Viewing

Please contact our Lawton & Dawe Properties Ltd Office on 01273917791 if you wish to arrange a viewing appointment for this property or require further information.



Floor Plan

Greenacres

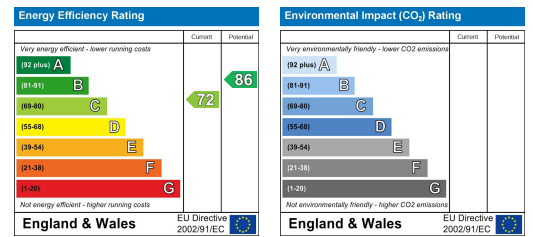


Approximate Gross Internal Area = 115.40 sq m / 1242.15 sq ft
Illustration for identification purposes only, measurements are approximate, not to scale.

Area Map



Energy Efficiency Graph



These particulars, whilst believed to be accurate are set out as a general outline only for guidance and do not constitute any part of an offer or contract. Intending purchasers should not rely on them as statements of representation of fact, but must satisfy themselves by inspection or otherwise as to their accuracy. No person in this firm's employment has the authority to make or give any representation or warranty in respect of the property.