



Lawton & Dawe

PROPERTIES



25 East Meadway

, Shoreham-By-Sea, BN43 5RF

Offers In The Region Of £755,000

We are pleased to bring to market a well-presented, detached family home situated in a sought-after residential area, close to the beach.

Benefiting from a spacious living room, dining room and a double garage, south-facing garden, the property is ideal for those looking for a family home with the option to enjoy the outdoors during the summer months.

The ground floor consists of a bright double hallway, with a kitchen, cupboard and convenient ground floor WC, a rear garden and a double garage, all with a view of the sea.

The hallway leads to a double living and dining room with a gas fire, providing an excellent space for both relaxing and entertaining. From there, doors lead into a bright three-story which enjoys views over the large rear garden and patio area and offers an additional view of the sea through the rear.

Upstairs, the property features two generously sized double bedrooms, including a master bedroom benefiting from its own en-suite shower room. There is a further family bathroom, which has a large corner bath and shower cubicle. A third single bedroom with built-in bed provides a perfect child's room, home office, or guest room.

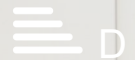
The garage has been thoughtfully converted to create a useful home office, also incorporating a practical utility area, providing additional flexible space ideal for home working and laundry/pantry. The property has gas central heating.

- EPC D
- Three bedroom detached house
- En-suite and family bathroom
- Large south facing garden
- Driveway for three cars
- Gas central heating
- Short walk to Shoreham beach
- Garage/office

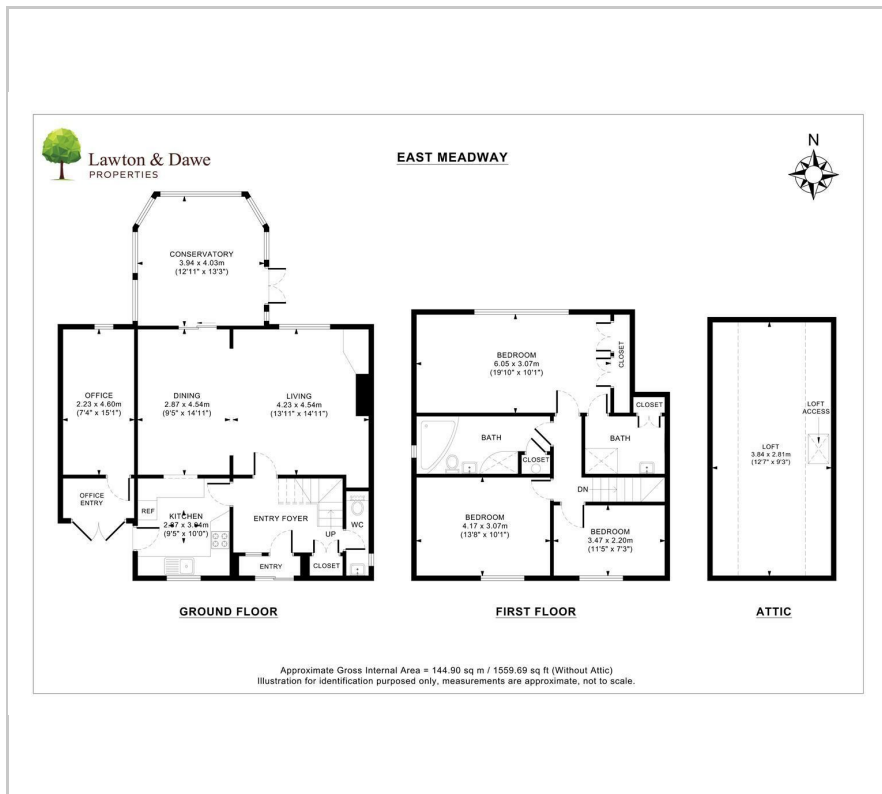
Viewing

Please contact our Lawton & Dawe Properties Ltd Office on 01273917791

if you wish to arrange a viewing appointment for this property or require further information.



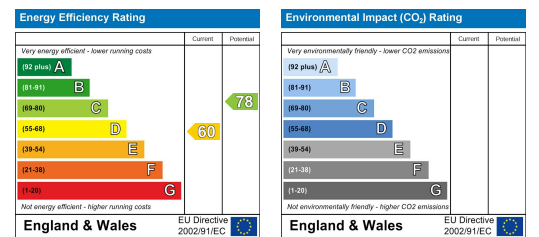
Floor Plan



Area Map



Energy Efficiency Graph



These particulars, whilst believed to be accurate are set out as a general outline only for guidance and do not constitute any part of an offer or contract. Intending purchasers should not rely on them as statements of representation of fact, but must satisfy themselves by inspection or otherwise as to their accuracy. No person in this firm's employment has the authority to make or give any representation or warranty in respect of the property.